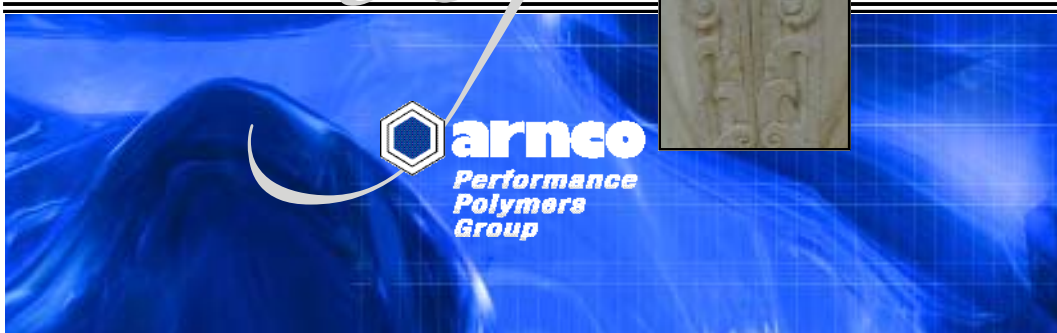


*Imagine the Possibilities*  
**STONECAST®**

Advanced Polyurethane Engineered for Production of Decorative & Structural Molded Products



*Imagine*



**S**tonecast is a two part urethane casting compound, which can be poured into a variety of mold types to produce tough, high hardness, lightweight components and finished products. Stonecast can be used alone or with additives to achieve the desired balance of physical properties and economics. Stonecast provides the following unique characteristics:

### Design Flexibility

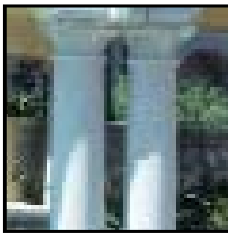
Stonecast can be used to make one piece finished products to replace



multi-component parts. It can be painted, stained, sanded, and drilled. A wide variety of surface appearances can be achieved to match existing materials, or to create new looks.

### Light Weight/ High Strength

Stonecast's finished parts have specific gravity of 0.9,

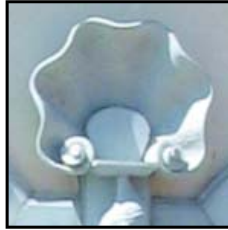


approximately the weight of most hardwoods. When properly designed, it provides excellent

toughness and structural strength for architectural and other applications.

### Low Shrinkage

Stonecast is engineered to generate less than 0.1% in-mold shrinkage.



Due to its low viscosity, molded pieces will reproduce intricate mold detail exactly and will maintain original shape after demold.

### Weatherability

When used with UV resistant coatings, Stonecast is ideal for outdoor applications, which require long term



durability and retention of color and appearance.

### Dimensional Stability

Stonecast has the lowest coefficient of thermal expansion (CTE) of any urethane casting resin currently available. Stonecast parts can be bonded to metal, concrete and wood without concern for detachment, warpage or cracking over a wide range of temperatures.

### Ease of Processing/ High Output

Stonecast does not require expensive processing equipment



to produce high quality parts. Customers can consistently hand pour large parts (up to 200 pounds), and demold in 10-20 minutes.

### Heat Resistance

Stonecast performs well under high heat conditions in continuous usage at 150°F. It will not sag or warp up to 180°F and maintains 68D hardness at 200°F.

### Fire Resistance

Stonecast can be manufactured to meet several recognized

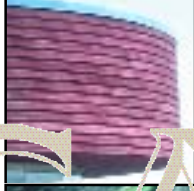


flame and smoke specifications.

### Low Toxicity

Stonecast systems are much safer to use than most casting compounds, such as FRP. It does not release harmful chemicals during or after processing.

# STONECAST



*Imagine*  
new ways to meet difficult design challenges

*Imagine*  
creating unique products, not feasible with any other material

*Imagine*  
recreating the look of high end materials such as marble and copper at a fraction of the price

*Imagine*  
combining beautiful appearance with high performance and durability

*Imagine*  
improved production output at lower cost

*Imagine*  
reduction of labor and installation with Stonecast one-piece designs



Typical Surfaces:

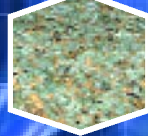
Woodgrain



Stone



Granite



Metallic



# ECAST

*Stonecast - advanced polyurethane engineered for production of decorative & structural molded products*



*Imagine the Possibilities*  
and you will discover many more applications  
where Stonecast can be used advantageously.  
We have listed a few suggestions below:

- *Architectural Elements*
- *Counter Tops - Bath & Kitchen*
- *Signage - Indoor & Outdoor*
- *Marine Applications*
- *Fireplace Surrounds / Mantles*
- *Pottery / Planters*
- *Faux Stone / Granite / Marble*
- *Wood Replacements*
- *Benches / Seating*
- *Shutters / Louvers*
- *Statuary / Artwork*
- *Fountains / Garden Items*
- *Roof Tiles*
- *Decorative Fiberglass Replacements*
- *Faux Tiles*



5141 Firestone Place  
South Gate, CA 90280  
323-249-7500  
800-432-3377  
Fax: 323-249-7507  
arnco@arnconet.com  
www.arnconet.com  
*Stonecast is a trademark of Arnco*